

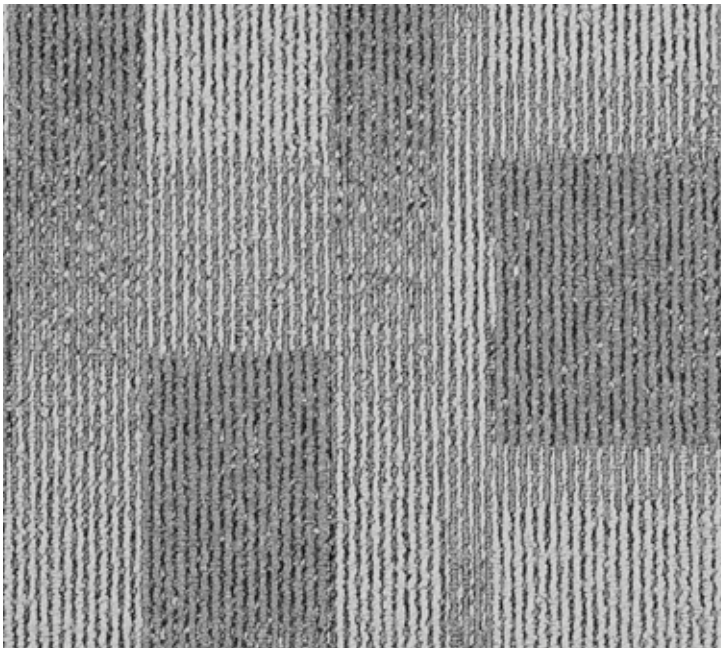
**itc** Carpet Tiles

**IMPRESSION  
LINEATION  
COBALT  
DIVA**

**L C T** ® **FIRST**

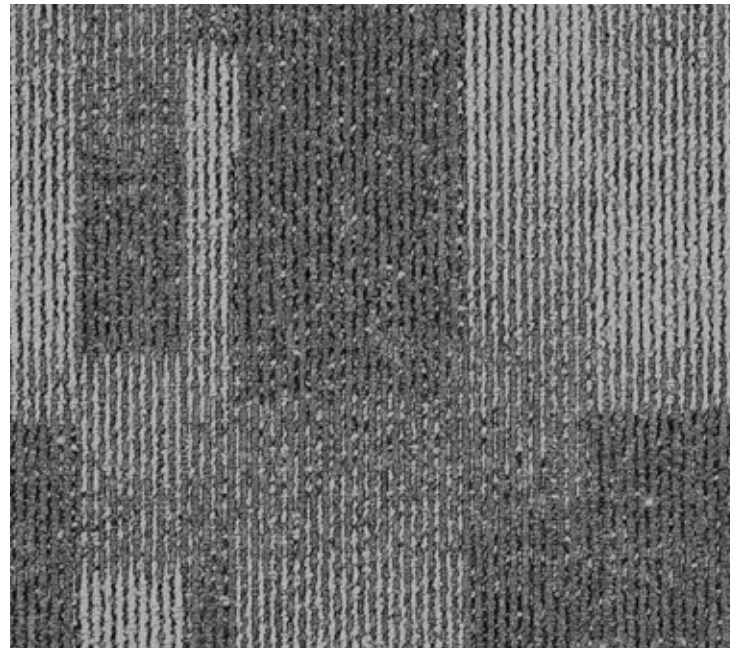
Luxury Carpet Tiles





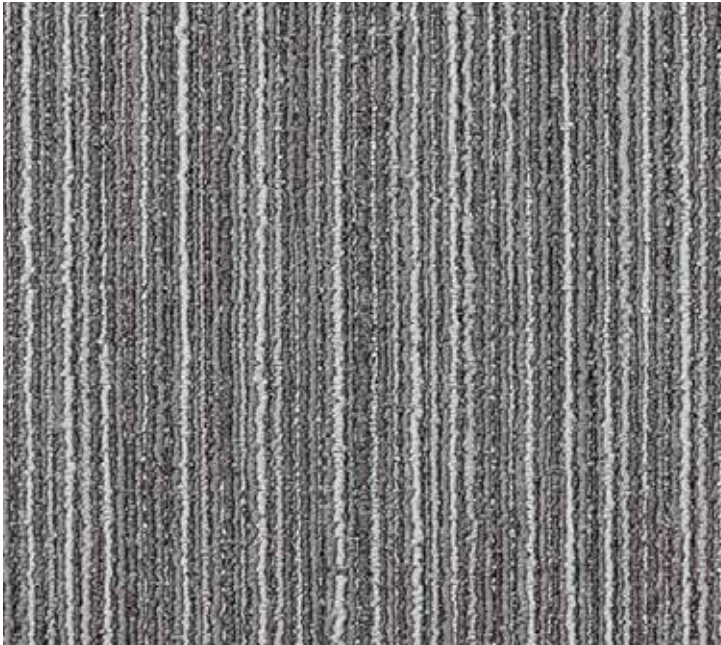
IMPRESSION 955

50 x 50 cm



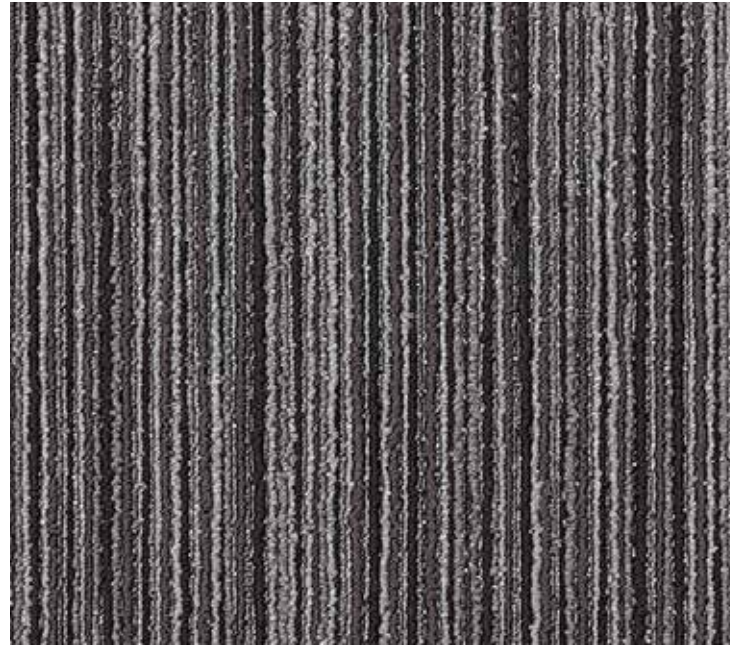
IMPRESSION 985

50 x 50 cm



LINEATION 900

50 x 50 cm



LINEATION 980

50 x 50 cm



COBALT 685

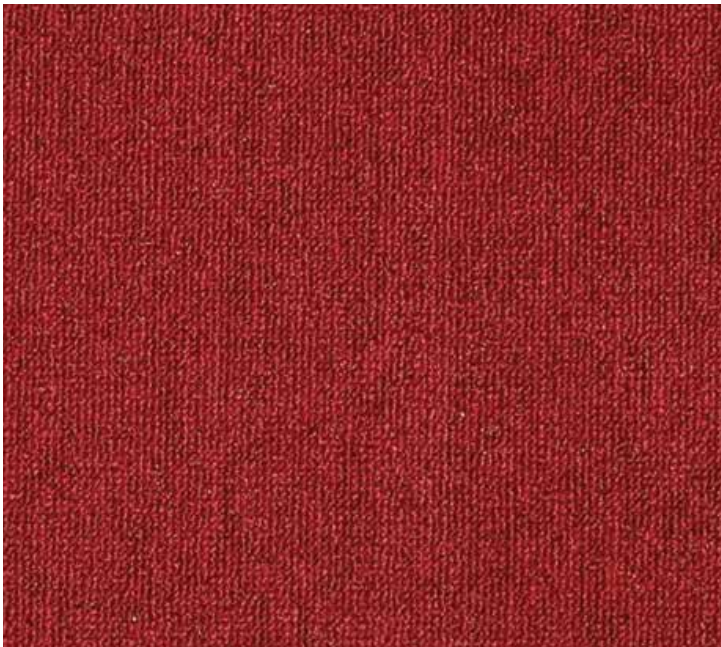
50 x 50 cm



COBALT 965

50 x 50 cm





DIVA 382

50 x 50 cm



DIVA 553

50 x 50 cm



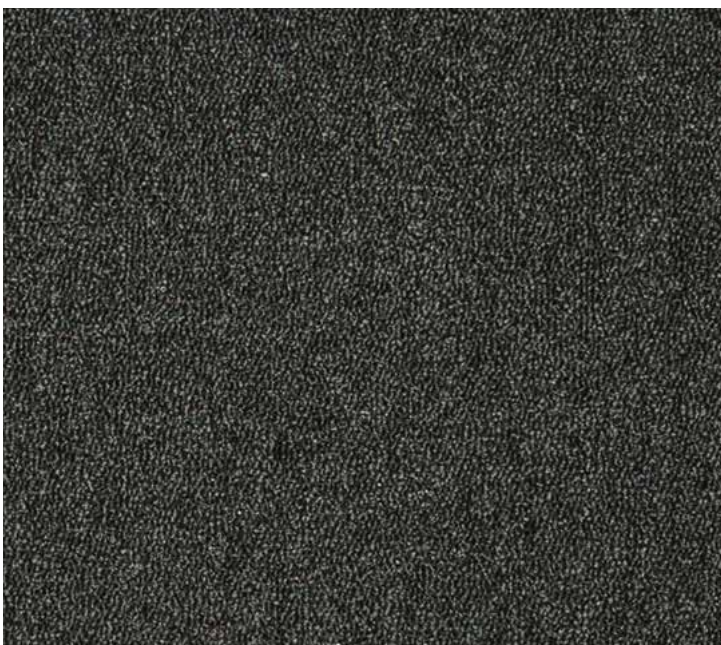
DIVA 595

50 x 50 cm



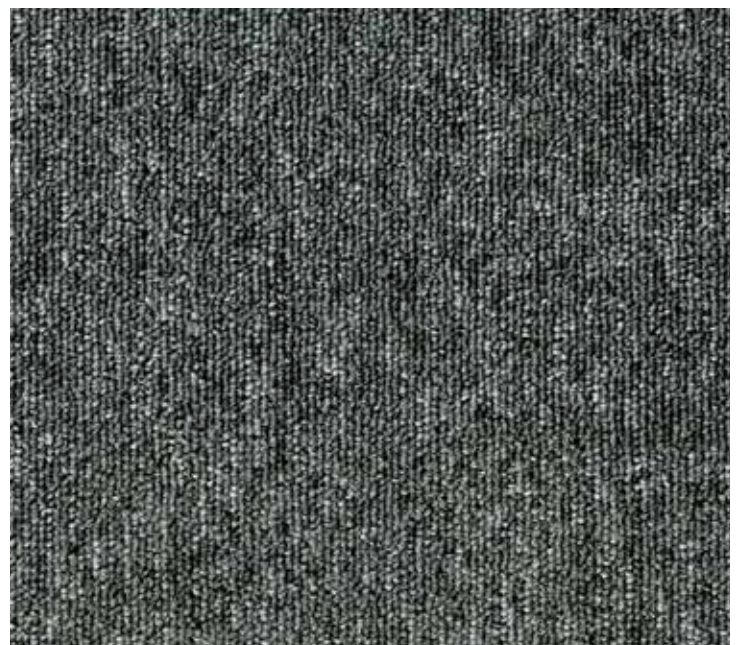
DIVA 942

50 x 50 cm



DIVA 966

50 x 50 cm



DIVA 980

50 x 50 cm





	IMPRESSION	LINEATION	COBALT	DIVA
Production Method	Tufting	Tufting	Tufting	Tufting
Construction	1/10" Loop Pile Bitumen+non wovnen	1/10" Loop Pile Bitumen+non wovnen	1/10" Loop Pile Bitumen+non wovnen	1/10" Loop Pile Bitumen+non wovnen
Pile Content	100 %PP Stainsafel®	100 %PP Stainsafel®	100 %PP Stainsafel®	100 %PP Stainsafel®
Pile Weight	Ca.550g/m <sup>2</sup>	Ca.550g/m <sup>2</sup>	Ca.550g/m <sup>2</sup>	Ca.360g/m <sup>2</sup>
Total Weight	Ca.4.300g/m <sup>2</sup>	Ca.4.300g/m <sup>2</sup>	Ca.4.300g/m <sup>2</sup>	Ca.3.725g/m <sup>2</sup>
Pile Height	Ca.4 mm	Ca.4 mm	Ca.4 mm	Ca.2.8 mm
Total Height	Ca.7 mm	Ca.7 mm	Ca.7 mm	Ca.5.7 mm
Tuft Density	Ca.185.650/m <sup>2</sup>	Ca.189.120/m <sup>2</sup>	Ca.202.760/m <sup>2</sup>	Ca.149.600/m <sup>2</sup>
Size	50 cm x 50 cm	50 cm x 50 cm	50 cm x 50 cm	50 cm x 50 cm
Packaging	5 m <sup>2</sup>	5 m <sup>2</sup>	5 m <sup>2</sup>	5 m <sup>2</sup>
Antistatique	< 2 kV	< 2 kV	< 2 kV	< 2 kV
Fire Class	C <sub>f</sub> -s1 (EN 13501-1) Centexbel 0493-CPR-0130	C <sub>f</sub> -s1 (EN 13501-1) Centexbel 0493-CPR-0130	C <sub>f</sub> -s1 (EN 13501-1) Centexbel 0493-CPR-0130	C <sub>f</sub> -s1 (EN 13501-1)
Sound Insulation	22 dB	22 dB	22 dB	22 dB
Fastness To Light	5-6	5-6	5-6	5-6
Water Fastness	4-5	4-5	4-5	4-5

EN 14041

**CE**

**DOP: 1010#B10ACL**

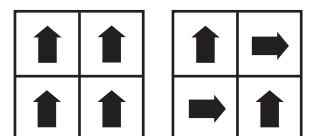
Textile Floor Covering

**EN 1307**



ÉMISSIONS DANS L'AIR INTÉRIEUR\*

**A+** A B C



**MADE IN BELGIUM**