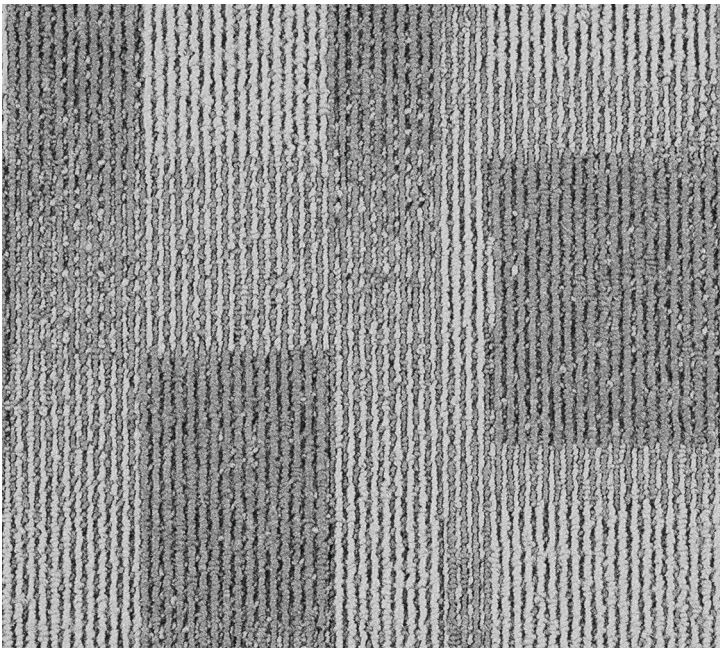


itc Carpet Tiles

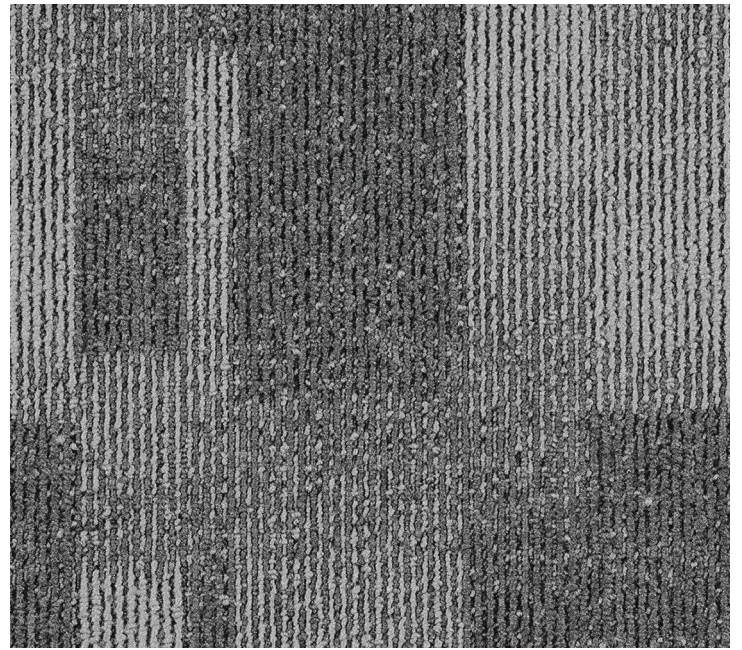
**IMPRESSION
LINEATION
COBALT
DIVA**

L C T FIRST
Luxury Carpet Tiles



IMPRESSION 955

50 x 50 cm



IMPRESSION 985

50 x 50 cm



LINEATION 900

50 x 50 cm



LINEATION 980

50 x 50 cm



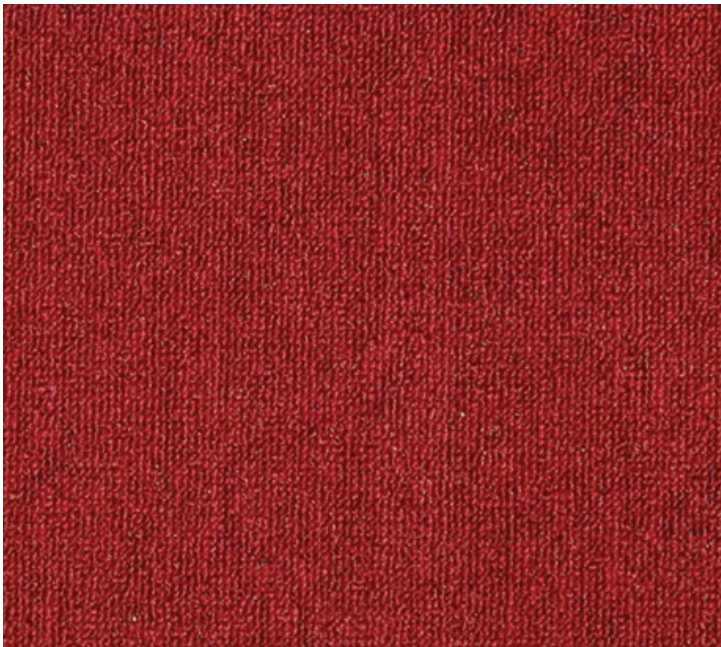
COBALT 685

50 x 50 cm



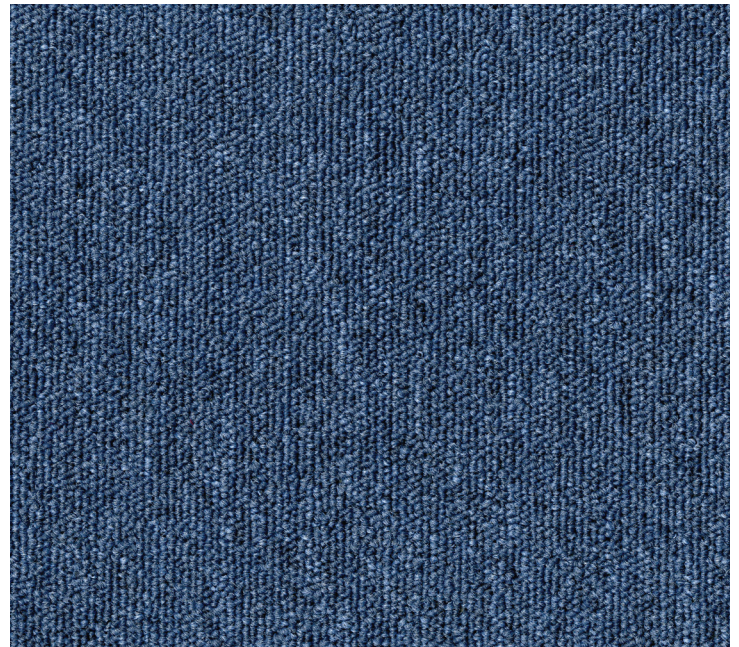
COBALT 965

50 x 50 cm



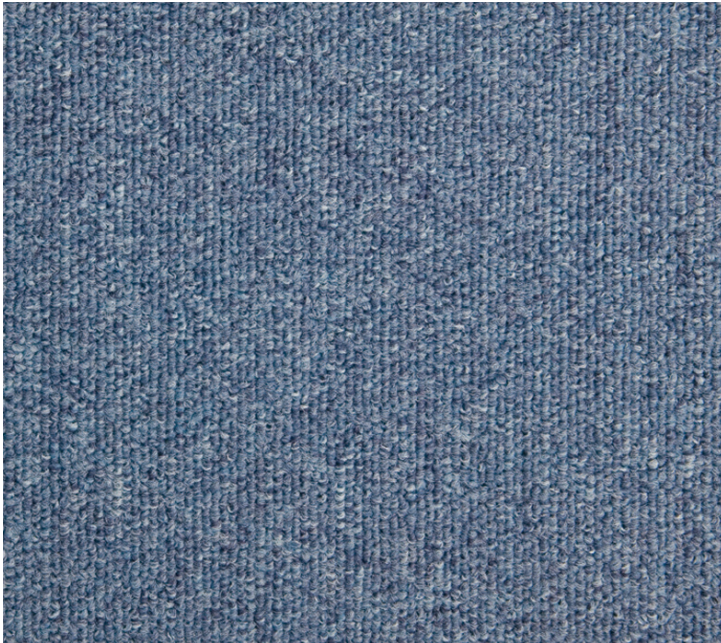
DIVA 382

50 x 50 cm



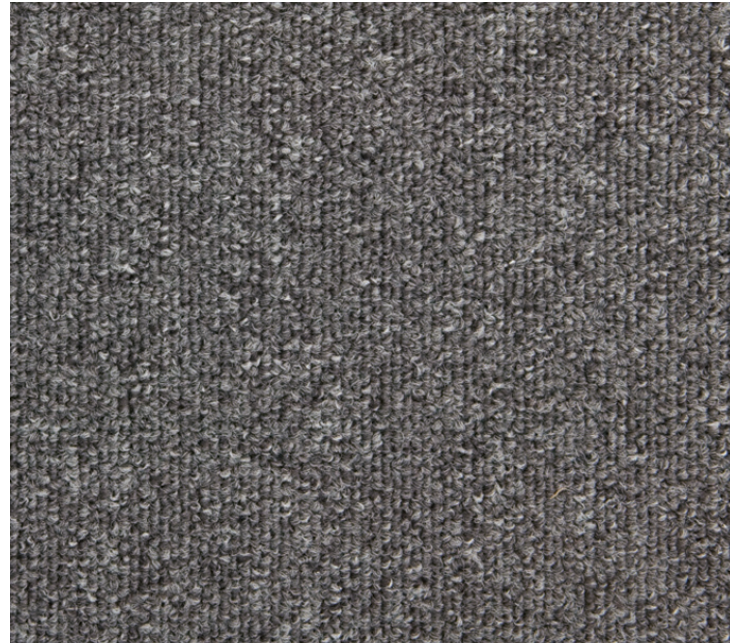
DIVA 553

50 x 50 cm



DIVA 595

50 x 50 cm



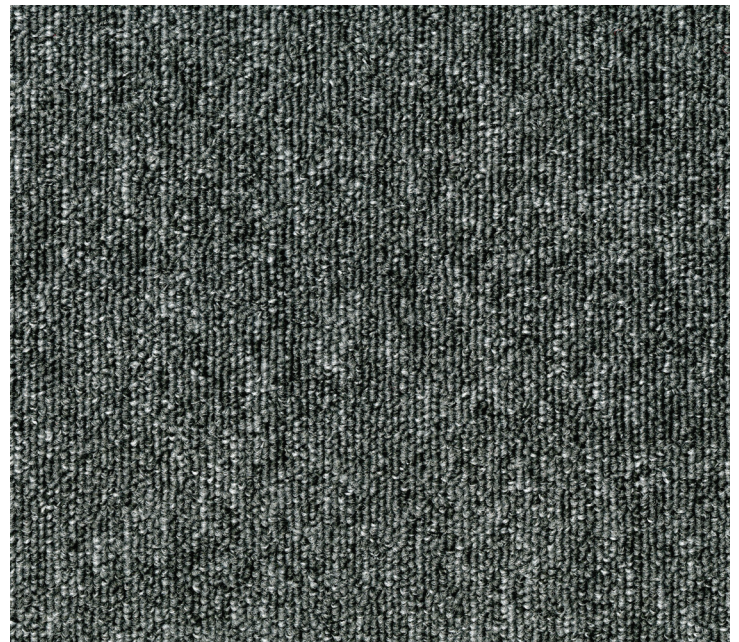
DIVA 942

50 x 50 cm



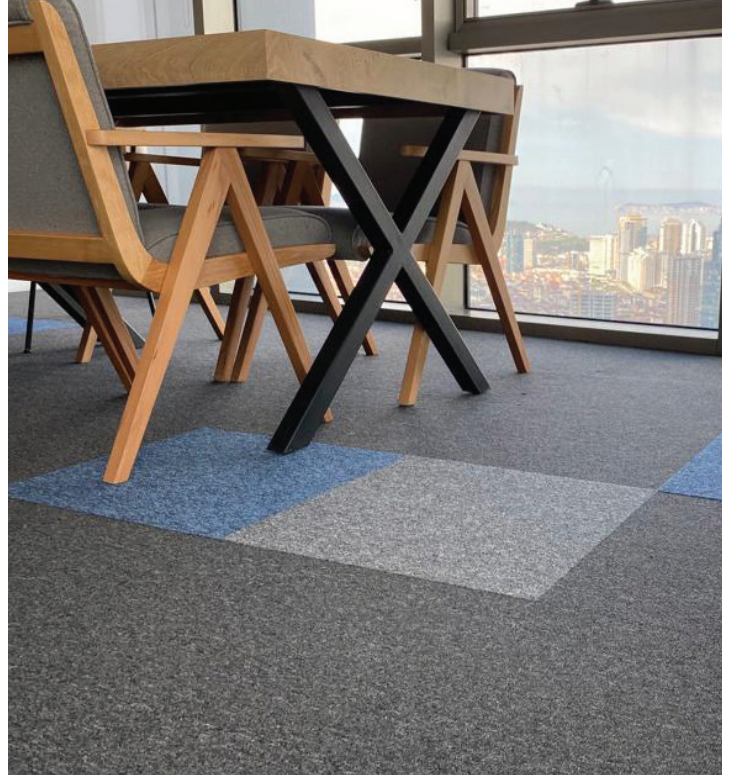
DIVA 966

50 x 50 cm



DIVA 980

50 x 50 cm



	IMPRESSION	LINEATION	COBALT	DIVA
Production Method	Tufting	Tufting	Tufting	Tufting
Construction	1/10" Loop Pile Bitumen+non wovnen	1/10" Loop Pile Bitumen+non wovnen	1/10" Loop Pile Bitumen+non wovnen	1/10" Loop Pile Bitumen+non wovnen
Pile Content	100 %PP Stainsafel®	100 %PP Stainsafel®	100 %PP Stainsafel®	100 %PP Stainsafel®
Pile Weight	Ca.550g/m ²	Ca.550g/m ²	Ca.550g/m ²	Ca.360g/m ²
Total Weight	Ca.4.300g/m ²	Ca.4.300g/m ²	Ca.4.300g/m ²	Ca.3.725g/m ²
Pile Height	Ca.4 mm	Ca.4 mm	Ca.4 mm	Ca.2.8 mm
Total Height	Ca.7 mm	Ca.7 mm	Ca.7 mm	Ca.5.7 mm
Tuft Density	Ca.185.650/m ²	Ca.189.120/m ²	Ca.202.760/m ²	Ca.149.600/m ²
Size	50 cm x 50 cm	50 cm x 50 cm	50 cm x 50 cm	50 cm x 50 cm
Packaging	5 m ²	5 m ²	5 m ²	5 m ²
Antistatique	< 2 kV	< 2 kV	< 2 kV	< 2 kV
Fire Class	C _f -s1 (EN 13501-1) Centexbel 0493-CPR-0130	C _f -s1 (EN 13501-1) Centexbel 0493-CPR-0130	C _f -s1 (EN 13501-1) Centexbel 0493-CPR-0130	C _f -s1 (EN 13501-1)
Sound Insulation	22 dB	22 dB	22 dB	22 dB
Fastness To Light	5-6	5-6	5-6	5-6
Water Fastness	4-5	4-5	4-5	4-5

EN 14041

CE

DOP: 1010#B10ACL

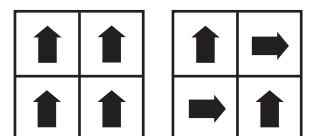
Textile Floor Covering

EN 1307



ÉMISSIONS DANS L'AIR INTÉRIEUR*

A+ A B C



MADE IN BELGIUM