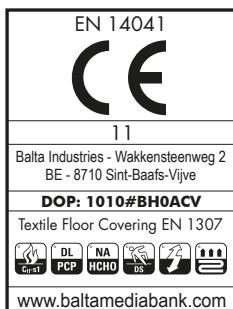


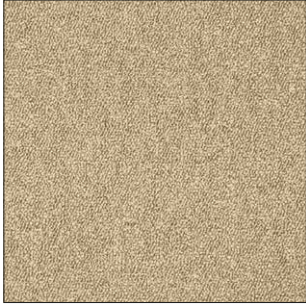
1/10" loop pile / bouclé / Schlinge / lussenpool

PILE CONTENT COMPOSITION DU VELOURS POLMATERIAL POOLSAMENSTELLING	100% PP Stainsafe [®]
PILE WEIGHT POIDS DU VELOURS POLGEWICHT POOLGEWICHT	Ca. 360 g/m ²
TOTAL WEIGHT POIDS TOTAL GESAMTGEWICHT TOTAAL GEWICHT	Ca. 3.725 g/m ²
PILE HEIGHT HAUTEUR DU VELOURS FLORHÖHE POOLHOOGTE	Ca. 2,8 mm
TOTAL HEIGHT HAUTEUR TOTALE GESAMTHÖHE TOTALE HOOGTE	Ca. 5,7 mm
TUFT DENSITY NOMBRE DE TOUFFES NOPPENZAHL AANTAL NOPPEN	Ca. 149.600/m ²
SIZE DIMENSIONS ABMESSUNG AFMETINGEN	50 x 50 cm
PACKAGING EMBALLAGE VERPACKUNG VERPAKKING	5 m ²
ANTISTATIQUE ANTISTATIQUE ANTISTATISCH ANTISTATISCH	< 2 kV
FIRE CLASS CLASSEMENT FEU BRANDVERHALTENSKLASSE BRANDKLASSE	C _{FL} -s1 (EN 13501-1)
FASTNESS TO LIGHT SOLIDITÉ À LA LUMIÈRE LICHTECHTHEIT LICHTECHTHEID	5-6
WATER FASTNESS SOLIDITÉ À L'EAU WASSERECHEIT WATERECHEID	4-5

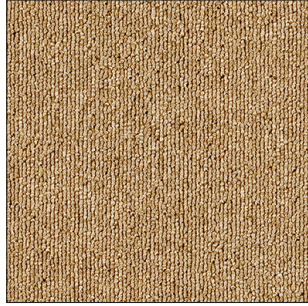


03/20 All rights reserved to alter technical specifications - Warranty conditions, see www.stain-safe.com
 Sous réserve de modifications techniques - conditions de garantie, voir www.stain-safe.com
 Unter Vorbehalt technischer Änderungen - Garantiebedingungen siehe www.stain-safe.com
 Onder voorbehoud van wijzigingen van technische specificaties - garantievoorwaarden: www.stain-safe.com

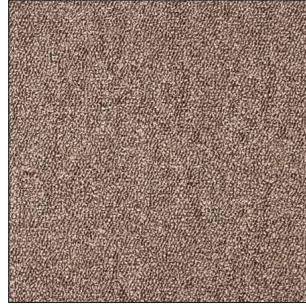




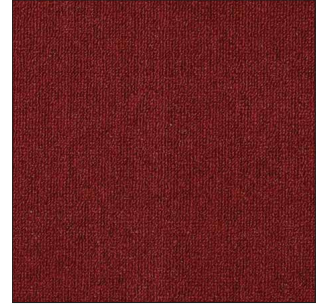
^ **790** 50 x 50 cm



^ **827** 50 x 50 cm



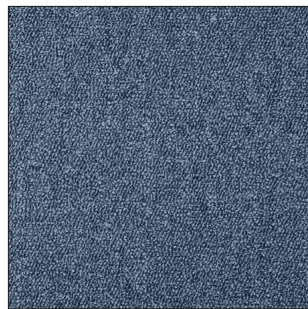
^ **155** 50 x 50 cm



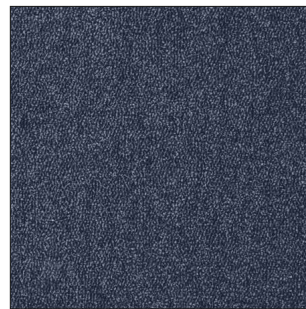
^ **382** 50 x 50 cm



^ **810** 50 x 50 cm



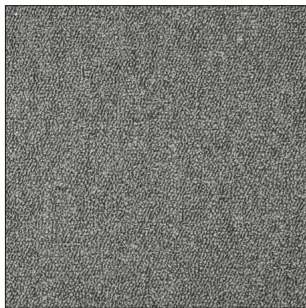
^ **595** 50 x 50 cm



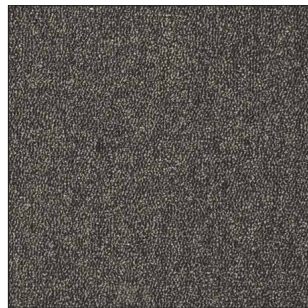
^ **553** 50 x 50 cm



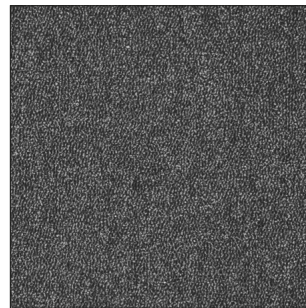
^ **390** 50 x 50 cm



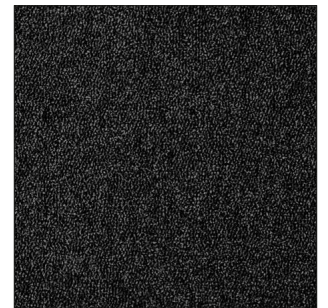
^ **930** 50 x 50 cm



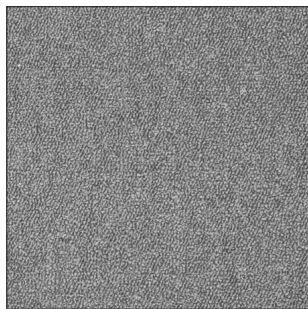
^ **970** 50 x 50 cm



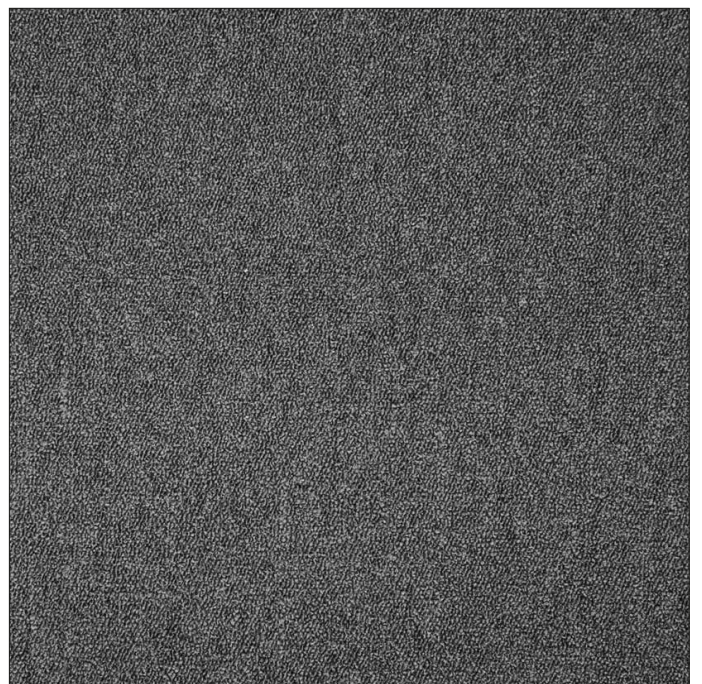
^ **980** 50 x 50 cm



^ **966** 50 x 50 cm



^ **950** 50 x 50 cm



^ **942** 50 x 50 cm